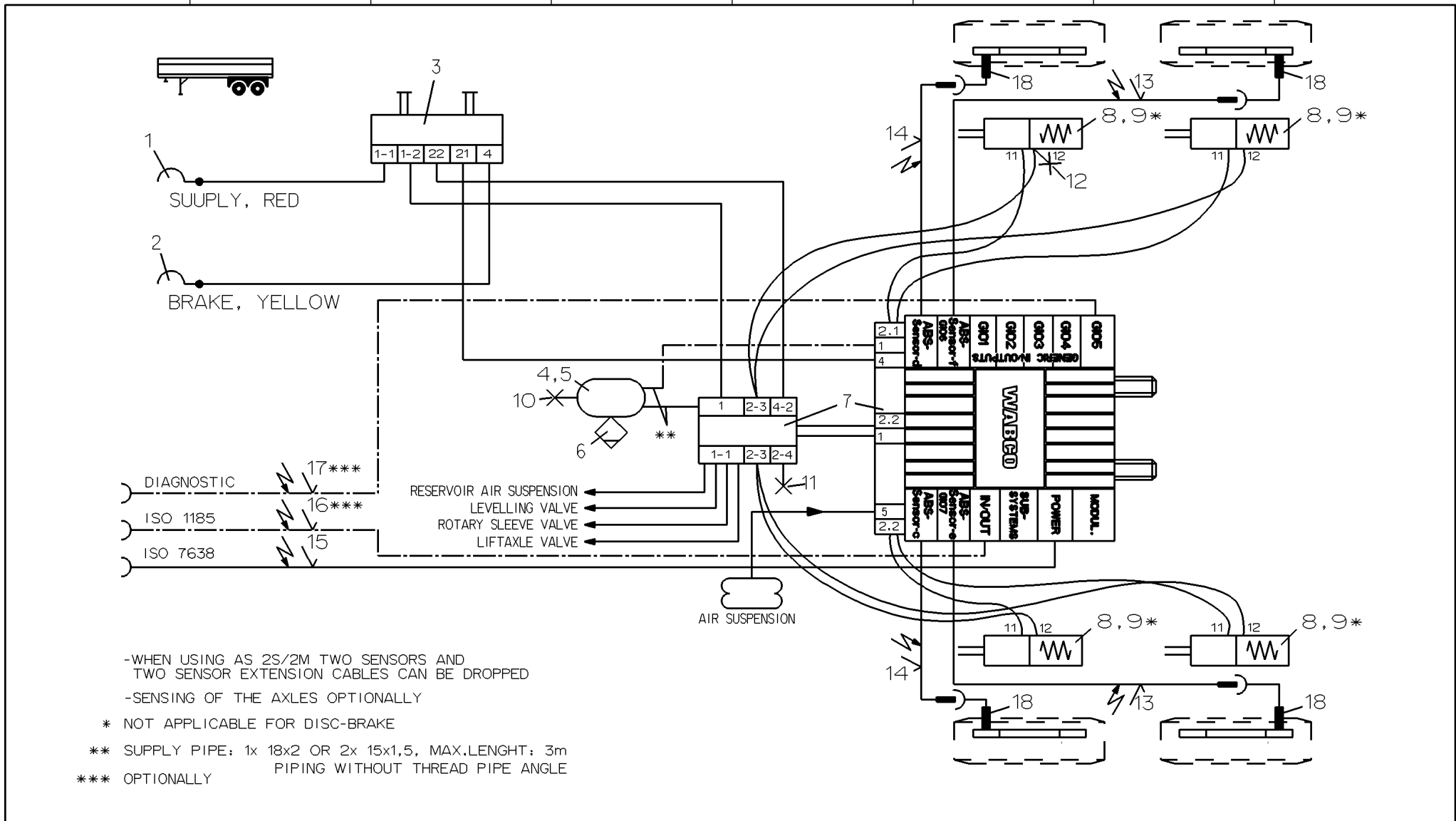


Non è permesso consegnare a terzi o riprodurre questo documento, né utilizzare il contenuto o renderlo comunque noto a terzi senza autorizzazione esplicita. Ogni infrazione costituisce un evidente abuso e comporterà il risarcimento dei danni subiti. E' fatta riserva di tutti i diritti derivanti da brevetti o modelli.

Toute communication ou reproduction de ce document, toute exploitation ou communication de son contenu sont interdites, sauf autorisation expresse. Tout manquement a cette règle constitue un abus évident et expose son auteur ou versement de dommages et intérêts. Tous droits de propriété industrielle réservés, notamment en matière de brevets et de modèles.

Wabco e Wabco, Vertriebsgesellschaft dieser Unterlage, Verwertung und Mitteilung dieses Inhalts nicht gestattet, soweit nicht ausdrücklich zugestimmt. Zuwiderhandlungen stellen einen offensichtlichen Missbrauch dar und verpflichten zu Schadensersatz. Alle Rechte fuer den Fall der Patenterteilung oder Gebrauchsmuster-Eintragung vorbehalten.

Copying of this document and giving it to others and the use or communication of the contents thereof, are forbidden without express authority. Contravention of this restriction will constitute an evident abuse and result in a liability to the payment of damages. All rights are reserved in the event of the grant of patent or registration of a utility model or design. This document is the subject of copyright.



- WHEN USING AS 2S/2M TWO SENSORS AND TWO SENSOR EXTENSION CABLES CAN BE DROPPED
- SENSING OF THE AXLES OPTIONALLY
- * NOT APPLICABLE FOR DISC-BRAKE
- ** SUPPLY PIPE: 1x 18x2 OR 2x 15x1,5, MAX.LENIGHT: 3m PIPING WITHOUT THREAD PIPE ANGLE
- *** OPTIONALLY

12	1	TEST CONNECTION	463 703 036 0				
11	1	TEST CONNECTION	463 703 120 0				
10	1	TEST CONNECTION	463 703 115 0				
9	4	KIT	423 903 532 2				
8	4	TRISTOP BRAKE ACTUATOR	925 0				
7	1	TRAILER-MODULATOR W.EXTENSION MODUL	480 102 ... 0				
6	1	DRAIN VALVE	934 300 001 0	18	4	ABS-SENSOR	441 032 8.. 0
5	2	HOSE CLAMP	451 999 ... 2	17	1	DIAGNOSTIC CABLE	449 611 ... 0
4	1	AIR RESERVOIR	950 0	16	1	24N-CABLE	449 349 ... 0
3	1	PARK-RELEASE-EMERG. VALVE (PREV)	971 002 9.. 0	15	1	SUPPLY (POWER) CABLE	449 173 ... 0
2	1	COUPLING HEAD W. INT. LINE FILTER	952 201 ... 0	14	2	EXTENSION CABLE FOR SENSOR	449 723 ... 0
1	1	COUPLING HEAD W. INT. LINE FILTER	952 201 ... 0	13	2	EXTENSION CABLE FOR SENSOR	449 723 ... 0
Pos.	Pcs.	Denomination	Product Identification No.	Pos.	Pcs.	Denomination	Product Identification No.

Copyright WABCO®

Date: 2009-07-07 Signature: BURMESTER

Drawn: BURMESTER

Checked: CHRONIS

Expert: BURMESTER

Mass: KG Scale: Material No. 841 701 193 0 Date of first issue: 2009-07-07

Size: CAD System: Pro/E

ECN-No.: - Revision: Techn. Resp.: 4990 Replacement for: 002 EN 1/1

Doc.Code Language Sheet

